

SEVERN SEARCHER

TWIN ENGINE
OFFSHORE RIB



LOA 10m

BOA 2.8m

Draft 0.8m

Flag UK

Class MECAL CoP cat 4 (14 PoB)
cat3 restricted (4 PoB)

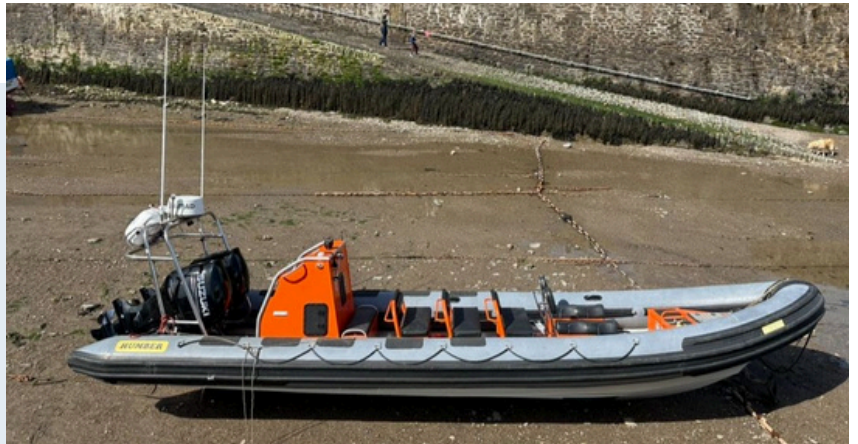
Engines 2 x Suzuki 200hp (2023)

Port Lynmouth

MMSI 235113324

Call Sign 2IWH4

Severn Searcher was built by the industry leaders 'Humber'. She is a fast, stable and safe RIB. She has been chartered successfully for SAR, salvage and counter pollution response, crew transfer, survey, tending AtNs, safety and chase boat, along with many other duties.



CONTACT (+44) 07970 029012 INFO@SSSCO.CO.UK
SEVERN SEA SHIPPING CO LTD, THE HARBOUR, LYNMOUTH,
NORTH DEVON, U.K., EX35 6EL